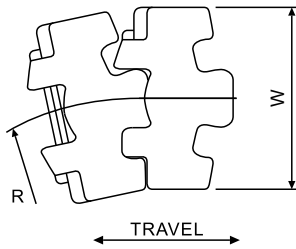
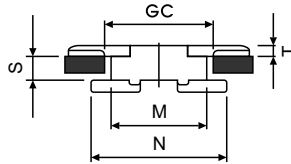
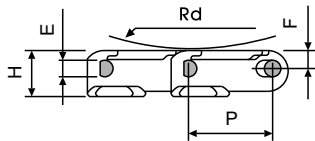
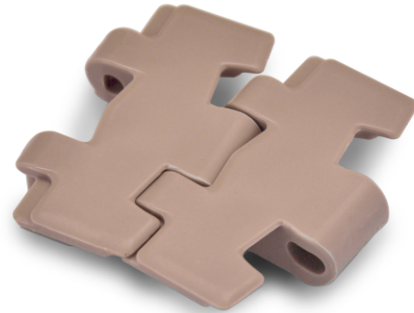
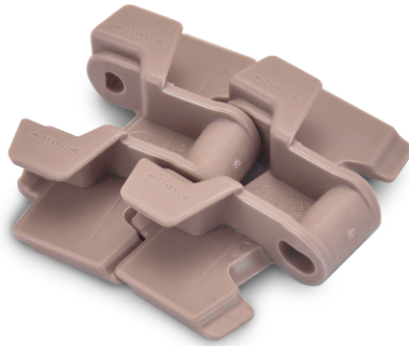


# 878 TAB BO SERIES

**Plate Materials:** POM-DP,POM-LF

**Pin Material:** Cold rolled austenitic stainless steel



Dimension	mm
P	38.1
W	-
E	7.1
T	4.8
F	8.4
N	61.5
M	42.9
S	11.5
H	20.8
R	190.0
RD	40.0
GC(Straight)	46.0
GC(Curve)	44.2

## 878 TAB BO (Side Flexing Plastic Chain)

	Width W		Working Load		Radius		Reverse Radius		Weight (kg/m)
	(mm)	(inch)	N(21°C)	lbs(21°C)	(mm)	(inch)	(mm)	(inch)	
878 TAB BO-K325	82.5	3.25	2100	472	190	7.48	40	1.575	1.08
878 TAB BO-K450	114.3	4.50	2100	472	190	7.48	40	1.575	1.20