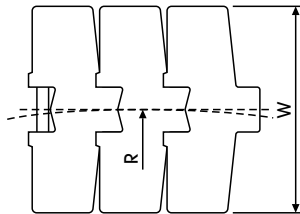
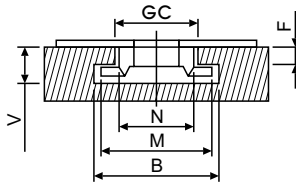
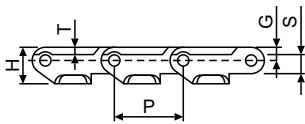
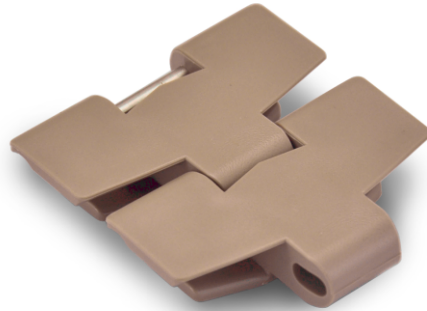


880TAB BO SERIES

Plate Materials: POM-DP,POM-LF

Pin Material: Cold rolled austenitic stainless steel



Dimension mm

P	38.1
R	190.0
W	-
H	20.0
T	4.0
F	10.0
N	43.0
M	62.0
S	12.0
G	7.6
B	70.0
V	18.0
GC(Straight)	46.0
GC(Curve)	44.2

880TAB BO (Side Flexing Plastic Chain)

	Width W		Working Load		Radius		Reverse Radius		Weight (kg/m)
	(mm)	(inch)	N(21°C)	lbs(21°C)	(mm)	(inch)	(mm)	(inch)	
880TAB BO-K325	82.5	3.25	1680	378	200	7.87	40	1.57	0.94
880TAB BO-K450	114.3	4.50	1680	378	200	7.87	40	1.57	1.11