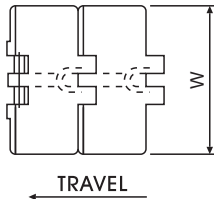
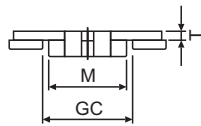
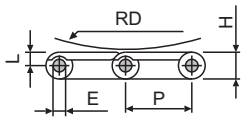
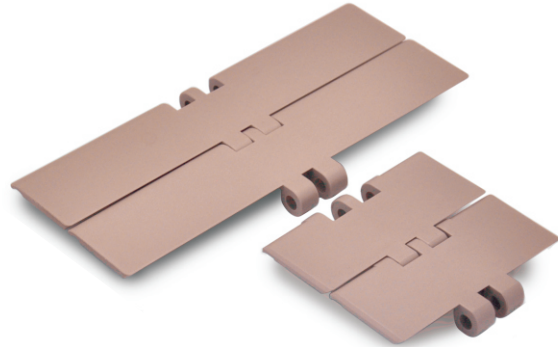
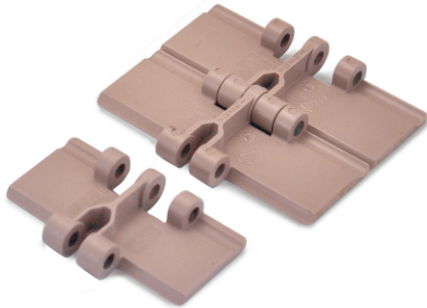


820 SERIES

Plate Materials: POM-DP,POM-LF

Pin Material: Cold rolled austenitic stainless steel



Dimension	mm
P	38.1
M	42.1
L	7.2
H	13.5
E	6.35
T	4.0
RD	40
GC	44.5

820 (Straight Running Plastic Chain)

	Width W		Working Load		Radius		Reverse Radius		Weight (kg/m)
	(mm)	(inch)	N(21°C)	lbs (21°C)	(mm)	(inch)	(mm)	(inch)	
820 K250	63.5	2.50	1230	276	-	-	50	1.97	0.73
820 K325	82.6	3.25	1230	276	-	-	50	1.97	0.83
820 K330	83.8	3.30	1230	276	-	-	50	1.97	0.85
820 K350	88.9	3.50	1230	276	-	-	50	1.97	0.87
820 K400	101.6	4.00	1230	276	-	-	50	1.97	0.95
820 K450	114.3	4.50	1230	276	-	-	50	1.97	1.03
820 K600	152.4	6.00	1230	276	-	-	50	1.97	1.25
820 K750	190.5	7.50	1230	276	-	-	50	1.97	1.47