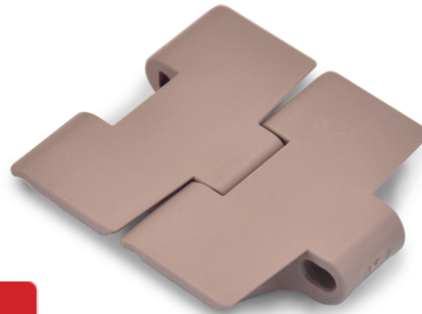
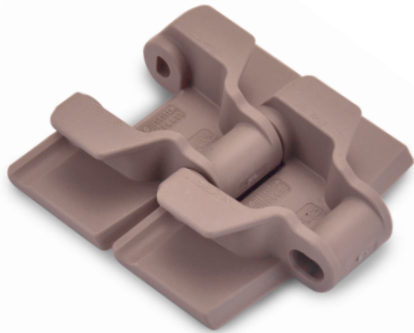


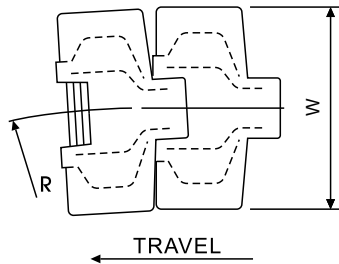
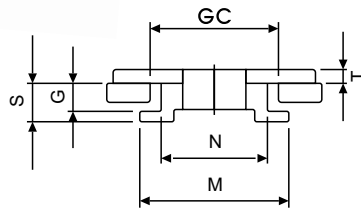
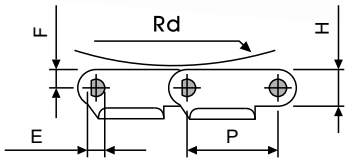
880TAB SERIES

Plate Materials: POM-DP,POM-LF

Pin Material: Cold rolled austenitic stainless steel



Tab System



Dimension	mm
P	38.1
R	400.0
W	-
H	20.0
T	4.0
F	7.6
E	7.1
M	61.1
N	42.9
S	16.0
G	11.5
RD	40.0
GC(Straight)	46.0
GC(Curve)	44.2

880TAB (Side Flexing Plastic Chain)

	Width W		Working Load		Radius		Reverse Radius		Weight (kg/m)
	(mm)	(inch)	N(21°C)	lbs(21°C)	(mm)	(inch)	(mm)	(inch)	
880TAB-K325	82.5	3.25	2100	472	457	18.00	40	1.57	0.94
880TAB-K450	114.5	4.50	2100	472	500	19.69	40	1.57	1.08
880TAB-K600	152.4	6.00	2100	472	560	22.05	40	1.57	1.32
880TAB-K750	190.5	7.50	2100	472	610	24.00	40	1.57	1.35